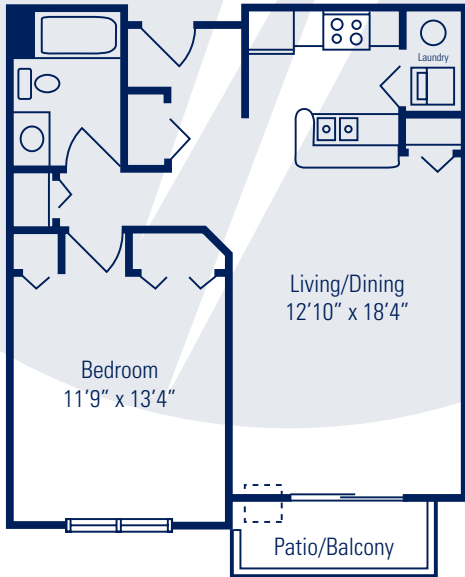
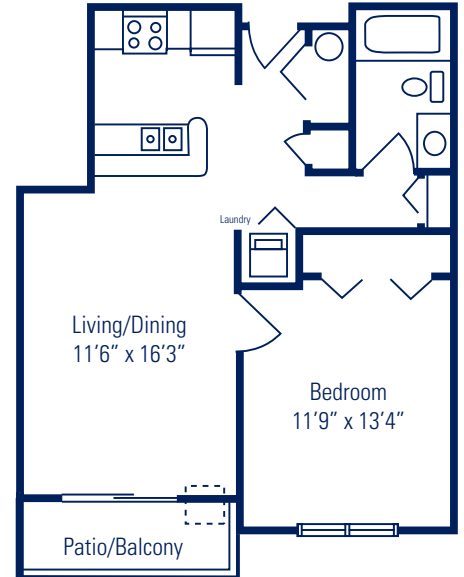




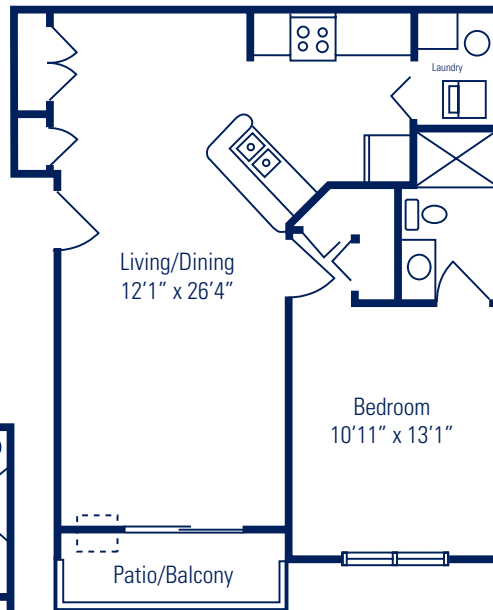
**PROHEALTH REGENCY
SENIOR COMMUNITIES**



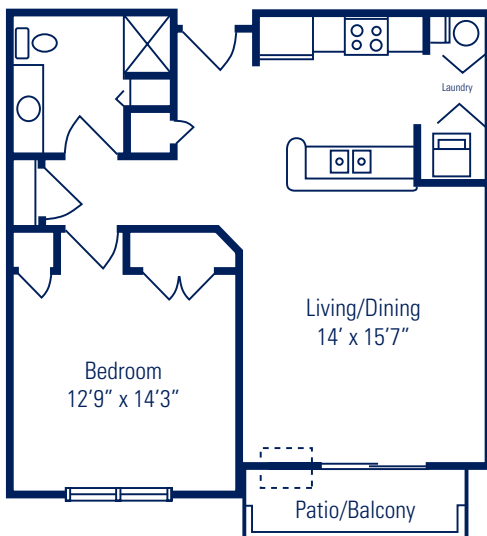
BRIGHTON
667 sq. ft.



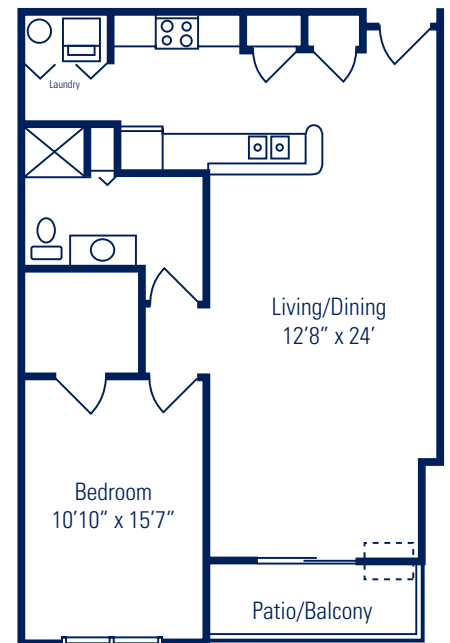
BRISTOL
594 sq. ft.



BRIDGEWATER
678 sq. ft.



BRADFORD
770 sq. ft.

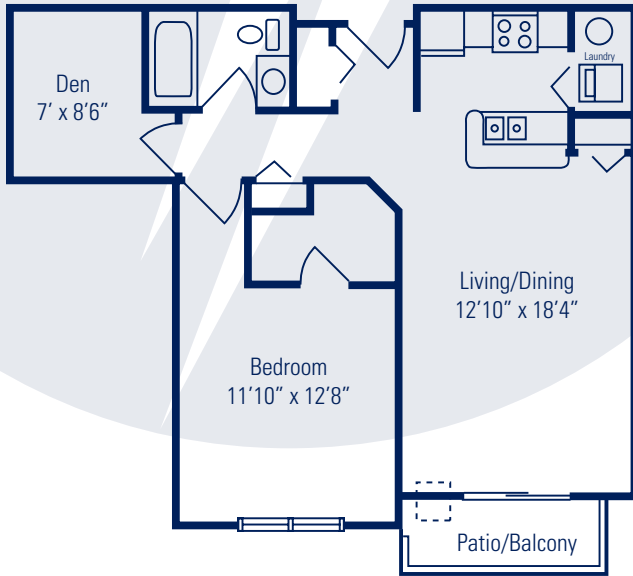


BRENTWOOD
943 sq. ft.

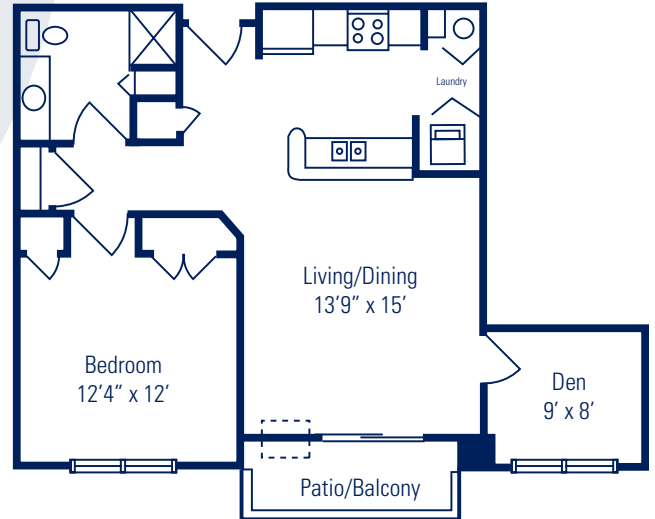




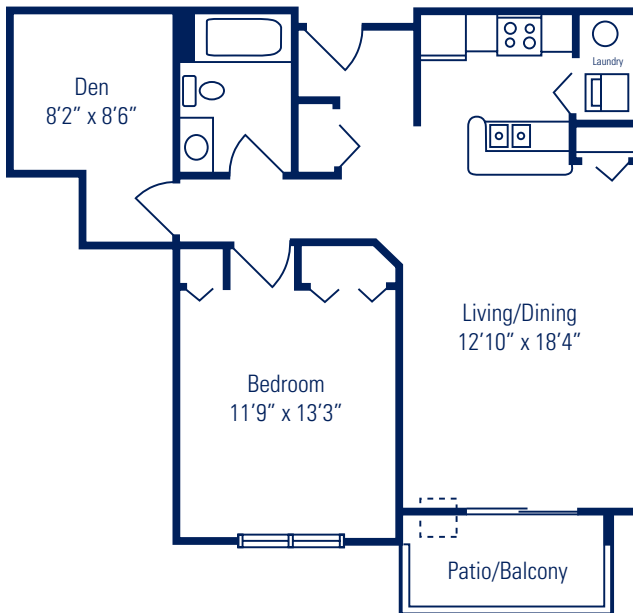
**PROHEALTH REGENCY
SENIOR COMMUNITIES**



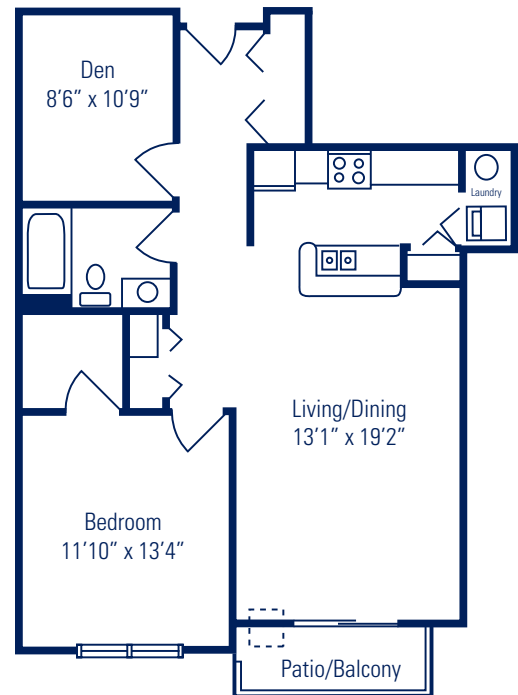
WINDSOR
739 sq. ft.



WETHERBY
842 sq. ft.



WINCHESTER
764 sq. ft.



WESTMINSTER
841 sq. ft.

